

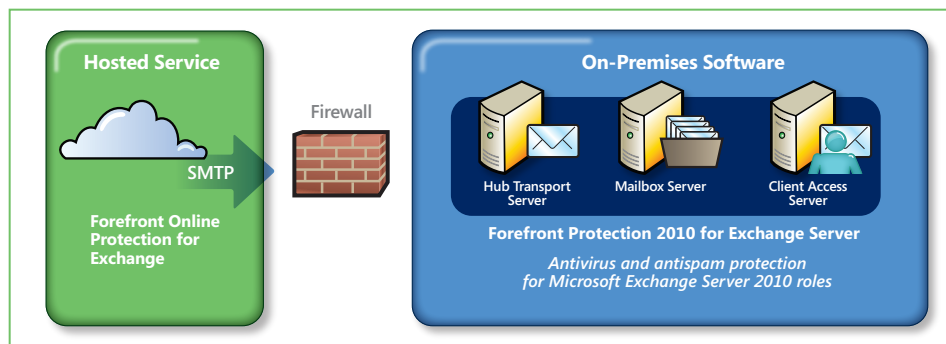
Microsoft® Forefront™ Protection 2010 for Exchange Server

Fast and Effective Protection Against Malware and Spam

Microsoft® Forefront™ Protection 2010 for Exchange Server provides fast and effective protection against malware and spam through the use of multiple scanning engines from industry-leading security partners. It also integrates with Microsoft Forefront Online Protection for Exchange to deliver the defense-in-depth benefits of hosted and on-premises filtering services in a single solution.

<http://www.microsoft.com/forefront/protection-for-exchange>

For secure messaging, a hybrid model of in-the-cloud services and on-premises software provides defense-in-depth protection. With Forefront Protection 2010 for Exchange, you can provision, configure, and report on the Forefront Online Protection for Exchange hosted service. This integration allows you to block unwanted external traffic before it ever reaches your network, while keeping internal network communications safe with multiple-engine protection at the server level.



Benefit from hybrid protection when you use Forefront Online Protection for Exchange.

Keep Your Business Moving with Improved Messaging Security

Forefront Protection for Exchange combines real-time filtering for viruses, spyware, spam, and content in a single solution to provide comprehensive protection for your Exchange Server 2010 and Exchange Server 2007 messaging environments. It does this through:

- Multiple-engine scanning to stop malware faster.
- Premium antis spam defense, including a new content-filtering engine and backscatter filtering.
- Integration with Forefront Online Protection for Exchange to deliver hybrid on-premises and in-the-cloud defense-in-depth protection.
- File and keyword filtering to detect dangerous files or out-of-policy content.

Forefront for Exchange is the only leading e-mail security product to offer multiple scanning engines in a single solution. When new threats are discovered, the time it takes anti-malware vendors to release definitions to detect them varies greatly—in many cases by days or weeks. The engine set in Forefront for Exchange draws on unique definitions and heuristic technologies from Microsoft and industry-leading partners and is proven to yield

faster detection rates than single-engine vendors (AVTest.org).

At the same time, Forefront for Exchange delivers industry-leading antis spam protection. It combines aggregated reputation services and a highly accurate premium antis spam technology from partner Cloudmark to provide a 99 percent detection rate with 1 in 250,000 false positives (West Coast Labs).

Through integration with Forefront Online Protection for Exchange, Forefront for Exchange offers a multilayered defense against spam and malware. From a single console, administrators can manage hosted protection that blocks threats before they reach the network and internal defenses to contain threats that find their way onto the network.

For an additional layer of security, Forefront for Exchange includes easy-to-use filters that can detect and block e-mail containing files that pose a risk to the organization or keywords that violate corporate policy.

Licensing note Customers who purchase the Forefront Protection Suite, Exchange Enterprise CAL, or Enterprise CAL Suite are licensed for both Forefront for Exchange and Forefront Online Protection for Exchange.

Key Benefits and Features

Comprehensive protection

Stops malware faster with multi-engine scanning

Runs up to five scan engines from Microsoft and industry-leading partners in different combinations at Edge, Hub, and Mailbox servers.

Provides a multilayer defense against spam and malware in the cloud and on premises

Forefront Online Protection for Exchange blocks spam and malware in the cloud; on-premises content filters catch threats that bypass external detection, for example, from laptops plugged into the network.

Provides premium antispam protection

Builds on basic functionality included in Exchange 2010 to deliver a 99 percent spam detection rate with 1 in 250,000 false positives (West Coast Labs). Includes

a Forefront DNS block list aggregated from multiple providers, anti-backscatter protocol filtering, and integration of the Cloudmark content filtering engine.

Blocks dangerous attachments and out-of-policy content

Detects risky file types even if the extension is changed, and uses keyword filters to block e-mail containing sensitive information. Both help to reduce company liability.

Eliminates single points of failure

Provides continuous protection, even if one engine fails or goes offline to update, without slowing mail delivery.

Integrated security

Maximizes detection without compromising performance

Balances security and performance using pre-built settings, dynamically choosing the most up-to-date and effective engines for each scan.

Optimizes antivirus scanning on Exchange Servers

Uses the latest transport agents and virus scanning API technologies of Exchange Server 2010 promoting compatibility, stability, and optimal scanning performance.

Enables hosted filtering in one click

Adds in-the-cloud filtering for spam and viruses quickly and easily.

Simplified management

Offers dashboard view of messaging security

Get an at-a-glance view of all detection statistics and messaging health data.

Automates download and distribution of signature updates

Using the Rapid Update Process, Microsoft monitors all scan-engine Web sites for updates. It then automatically downloads, validates, and posts new engine versions and signatures to Forefront for Exchange.

Extends manageability

Use Windows PowerShell™ integration to easily create new management and configuration scripts.

Monitors messaging security health

Uses the System Center Operations Management Pack to help ensure that messaging protection is optimal.

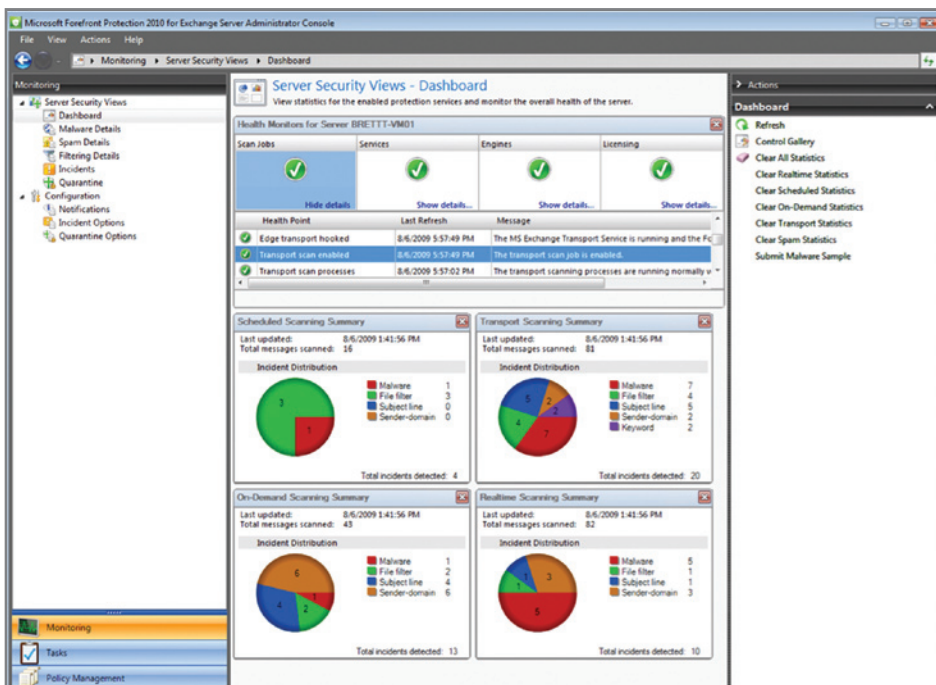
Coming soon!

Centralized management

Will integrate with Forefront Protection Manager (when it becomes available) to provide centralized configuration and reporting across multiple Forefront for Exchange installations.

For more information about Forefront Protection for Exchange, visit <http://www.microsoft.com/forefront/protection-for-exchange>.

Integrated view of messaging security



Forefront for Exchange administrator console provides an easy-to-use dashboard view of messaging security.

Languages and System Requirements

Forefront for Exchange is available in 11 languages: English, French, German, Italian, Japanese, Korean, Chinese (Simplified), Chinese (Traditional), Portuguese (Brazil), Spanish, and Russian.

Processor: x64 architecture-based computer with Intel Xeon or Pentium-family processor that supports Intel Extended Memory 64 Technology (Intel EM64T), AMD Opteron, or Athlon 64 processor that supports the AMD64 platform. **Memory:** 2 GB. **Hard disk:** 2GB of available space or more. **Server software:** Microsoft Windows Server® 2003 SP2, Microsoft Windows Server 2008, or Microsoft Windows Server 2008 R2; Microsoft Exchange Server 2007 or Microsoft Exchange Server 2010. **Server:** A four-core server with 2.0 GHz or higher processors is recommended; Microsoft SML Core Services (MSXML) 6.0 SP1. **Additional requirements:** Microsoft .NET Framework 3.0 Windows Communication Foundation or Microsoft .NET Framework 3.5 (automatically installed with Exchange Server 2010); Windows PowerShell 1.0; Microsoft Chart Controls for Microsoft .NET Framework 3.5; Client Access Server).